

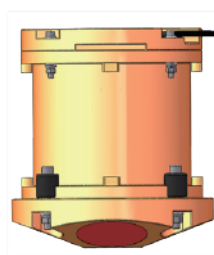


The RIV series ADCP (Acoustic Doppler Current Profiler) are designed and introduced jointly by Institute of Acoustics, Chinese Academy of Sciences and CSSC Haiying Marine Company for providing an accurate acoustic current profiling solution. Composed of the ADCP sonar, communication cables and IOARiver current measurement software, the RIV series are ideally used for collecting highly accurate velocities even in harsh environments. Gyro, GPS, radio station and other external devices are optional combined with RIV series to be installed on survey vessels and triple-hulled vessels for moving measurements.

RIV Series Acoustic Doppler Current Profiler

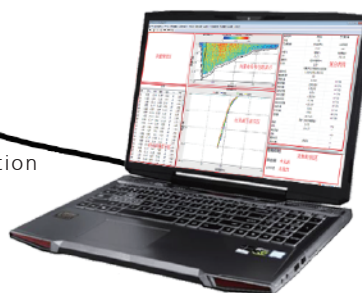
Features

- First-class acoustic technology and guaranteed quality of military industry.
- High velocity accuracy meeting SL337-2006 and GJB1032 standards.
- Easy maintenance with robust and reliable internal framework.
- Capability of uploading the measurement results to the specified Web server.
- Has been applied and proved by a range of hydraulic institutions of China's Ministry of Water Resources.
- Purely indigenous advantage and more competitive price compared with equivalent ADCPs on the market.
- Perfect service supported by experienced technicians, offering whatever you need during the measurement within the shortest time.



ADCP host

Communication



IOA software

Computer



Specifications

Type	RIV-300	RIV-600	RIV-1200
Current profiling			
Frequency	300kHz	600kHz	1200kHz
Profiling range	1~120m	0.4~80m	0.2~35m
Velocity range	±5m/s	±5m/s	±10m/s
Accuracy	±0.5%±5mm/s	±0.25%±2mm/s	±0.3%±3mm/s
Resolution	1mm/s	1mm/s	1mm/s
Layer size	1~8m	0.25~4m	0.1~2m
Number of layers	1~260	1~260	1~260
Data output rate	1Hz	1Hz	1Hz
Bottom tracking			
Frequency	300kHz	600kHz	1200kHz
Depth range	2~200m	1~120m	0.7~35m
Accuracy	±0.5%±5mm/s	±0.25%±2mm/s	±0.3%±3mm/s
Velocity range	±10m/s	±10m/s	±10m/s
Data output rate	1Hz	1Hz	1Hz
Transducer & hardware			
Beam angle	20°	20°	20°
Beam width	4°	2°	2°
Configuration	4 beams, JANUS		
Storage	8G standard, 16G, 32G or higher capacity optional		
Communications	RS422, RS232 or 10M Ethernet		
House material	POM (standard), titanium, aluminum optional (depends on the depth rating required)		
Sensors			
Temperature	Range: -10°C~ 85°C; Accuracy: ±0.5°C;		Resolution: 0.01°C
Motion	Range: ±50°;	Accuracy: ±0.2°;	Resolution: 0.01°
Heading	Range: 0~360°;	Accuracy: ±0.5°(calibrated); Resolution: 0.1°	
Power supply			
Power consumption	≤10W		
DC input	10.5V~36V		

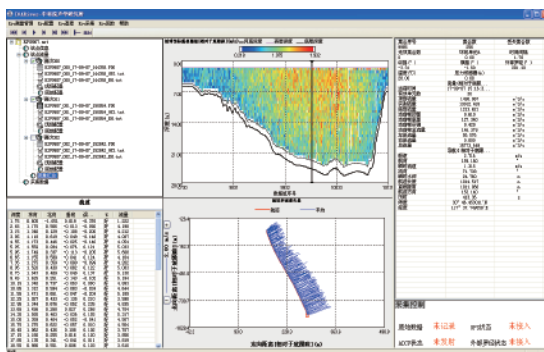




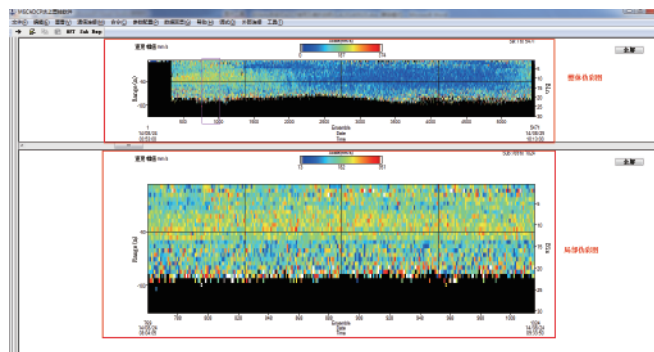
Specifications

Type	RIV-300	RIV-600	RIV-1200
Weight & dimension			
Dimension	236mm(H)×230mm (Dia)	236mm(H)×225mm(Dia)	236mm(H)×202mm(Dia)
Weight	8kg in air (standard)	7.5kg in air, 5kg in water (standard)	7kg in air (standard)
Depth rating	100m/500m/2000m/4000m/6000m		
Operation Temp.	-5°~ 45°C, relative humidity≤93%		
Storage Temp.	-25° ~ 65°C, relative humidity≤93%		
Software	IOA river current measurement software with acquisition and navigation modules		

Issue(10.18).



Software interface



Data replay



Applied in ripple-hulled vessels



Certified by China's Ministry of Water Resource

